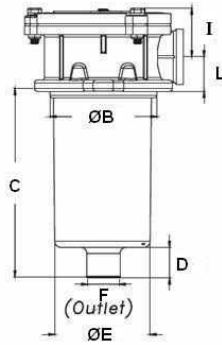


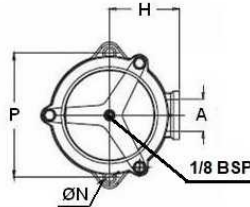
Filters

Return filter semi-submerged (head)

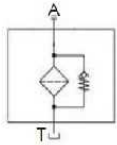
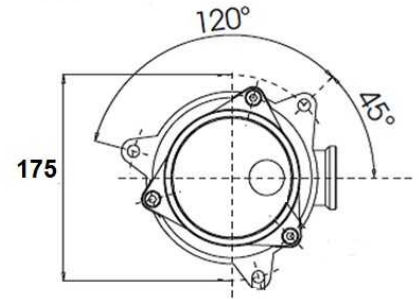
Page: 1/1



FITR10
FITR21
FITR23



FITR40



Direct tank mounting

Pressure: Max.pressure:8 bar
Test pressure: 12 bar
Burst pressure:16 bar

OPERATING TEMPERATURE RANGE: -25°C +100°C

FLUID COMPATIBILITY: Full with HH-HL-HM-HV (acc. To ISO 2943).

DIFFERENTIAL COLLAPSE PRESSURE: 10 bar

Tested according to ISO 2941, 2942, 2943

MATERIALS: Cover: aluminium alloy
Head: aluminium alloy
Bowl: PA6 reinforced (size 10 to 43) - zinc plated steel (size 50 to 64)
Seal: NBR (FKM on request)

Part n°	R1	Cartridge	ØB	ØE	ØN	C	D	F	H	I	L	P
FITR10	1/2" BSP	FITCR10	68	58	7	89	15	19	53	27	24	90
FITR21	3/4" BSP	FITCR20	87	78	8,5	104	25	22	65	36	28	115
FITR23	1" BSP	FITCR22	87	78	8,5	153	25	22	65	36	28	115
FITR40	1" BSP	FITCR40	129	-	10	241	30	40	95	55	35	175