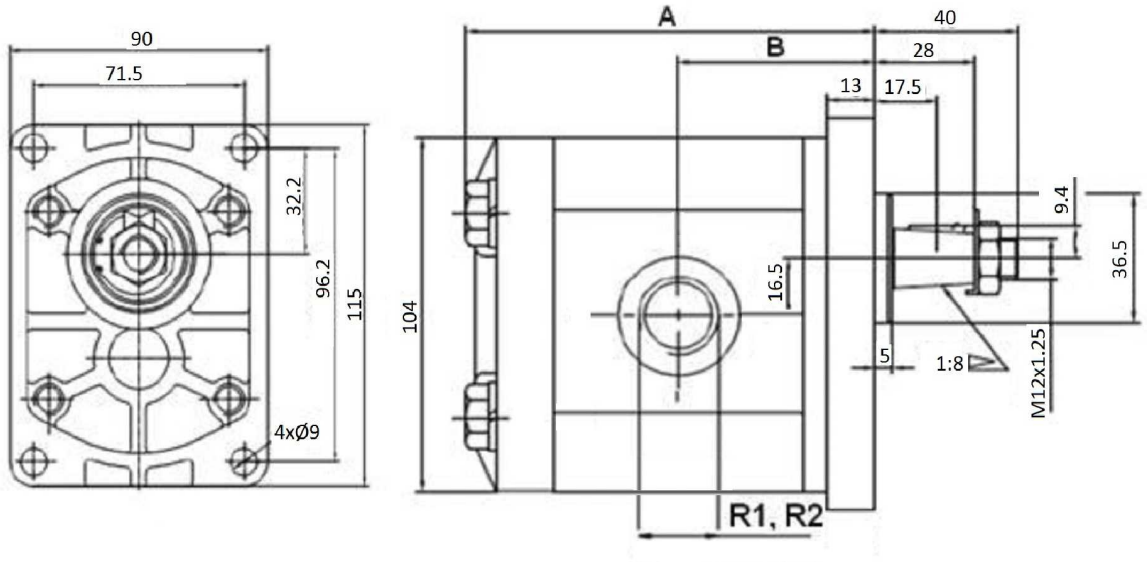


Gear pumps

Gear pumps Group II Right

Gr.II Gear pump/Eur.flange/Tapered shaft 1:8 /Threaded Side ports type

Page: 1/1



Rotation reference: BTD...I=Rotation left
BTD...D=Rotation right
Min 500 rpm

Flange and cover: Alluminum

| Part n° | R1 | R2 | Max. Press. (bar) | Max. Peak press. | R.P.M Max | cm ³ / rev | A | B |
|-------------------|----------|----------|-------------------|------------------|-----------|-----------------------|-------|------|
| BTD240D01 | 1/2" BSP | 1/2" BSP | 250 | 300 | 3500 | 4 | 95,5 | 43,3 |
| BTD260D01 | 1/2" BSP | 1/2" BSP | 250 | 300 | 3500 | 6 | 99 | 45 |
| BTD280D01 | 1/2" BSP | 1/2" BSP | 250 | 300 | 3500 | 8 | 102 | 46,5 |
| BTD2100D01 | 1/2" BSP | 1/2" BSP | 250 | 300 | 3500 | 10 | 105 | 48 |
| BTD2120D01 | 1/2" BSP | 1/2" BSP | 250 | 300 | 3500 | 12 | 108 | 49,5 |
| BTD2140D01 | 3/4" BSP | 1/2" BSP | 250 | 300 | 3500 | 14 | 111 | 51 |
| BTD2160D01 | 3/4" BSP | 1/2" BSP | 250 | 300 | 3500 | 16 | 114 | 52,5 |
| BTD2200D01 | 3/4" BSP | 1/2" BSP | 250 | 300 | 3500 | 20 | 121 | 56 |
| BTD2230D01 | 3/4" BSP | 1/2" BSP | 200 | 250 | 3000 | 23 | 125,5 | 58,3 |
| BTD2250D01 | 3/4" BSP | 1/2" BSP | 200 | 250 | 3000 | 25 | 128 | 59,5 |
| BTD2280D01 | 3/4" BSP | 1/2" BSP | 160 | 200 | 3000 | 28 | 133 | 62 |
| BTD2300D01 | 3/4" BSP | 1/2" BSP | 160 | 200 | 3000 | 30 | 136 | 63,5 |

(*) R1 = inlet; R2 = outlet
DECIBELS: 70 dB
Tightening torque 45-50 Nm