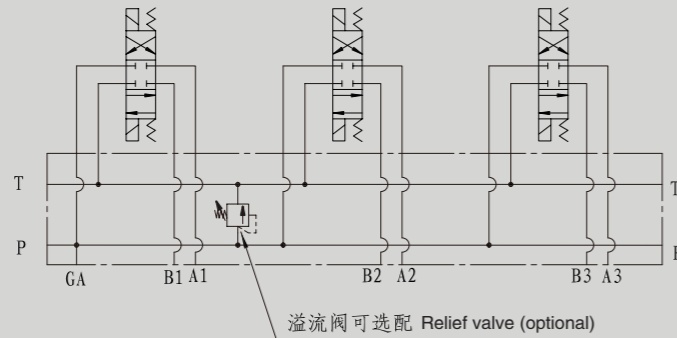


### HSD(A)ZVB6P 阀板系列

### HSD(A)ZVB6P SERIES MANIFOLD

#### 符号 SYMBOL



溢流阀可选配 Relief valve (optional)

#### HSZVB16P 阀板 MANIFOLD



A=铝LD7最高压力20.7MPa  
D=钢45#最高压力31.5MPa  
A=Aluminum max pressure 20.7MPa  
D=Steel max pressure 31.5MPa

ZVB6=6通路阀板  
ZVB6=NG6 manifold

P=并联油路块  
P=Parallel connection

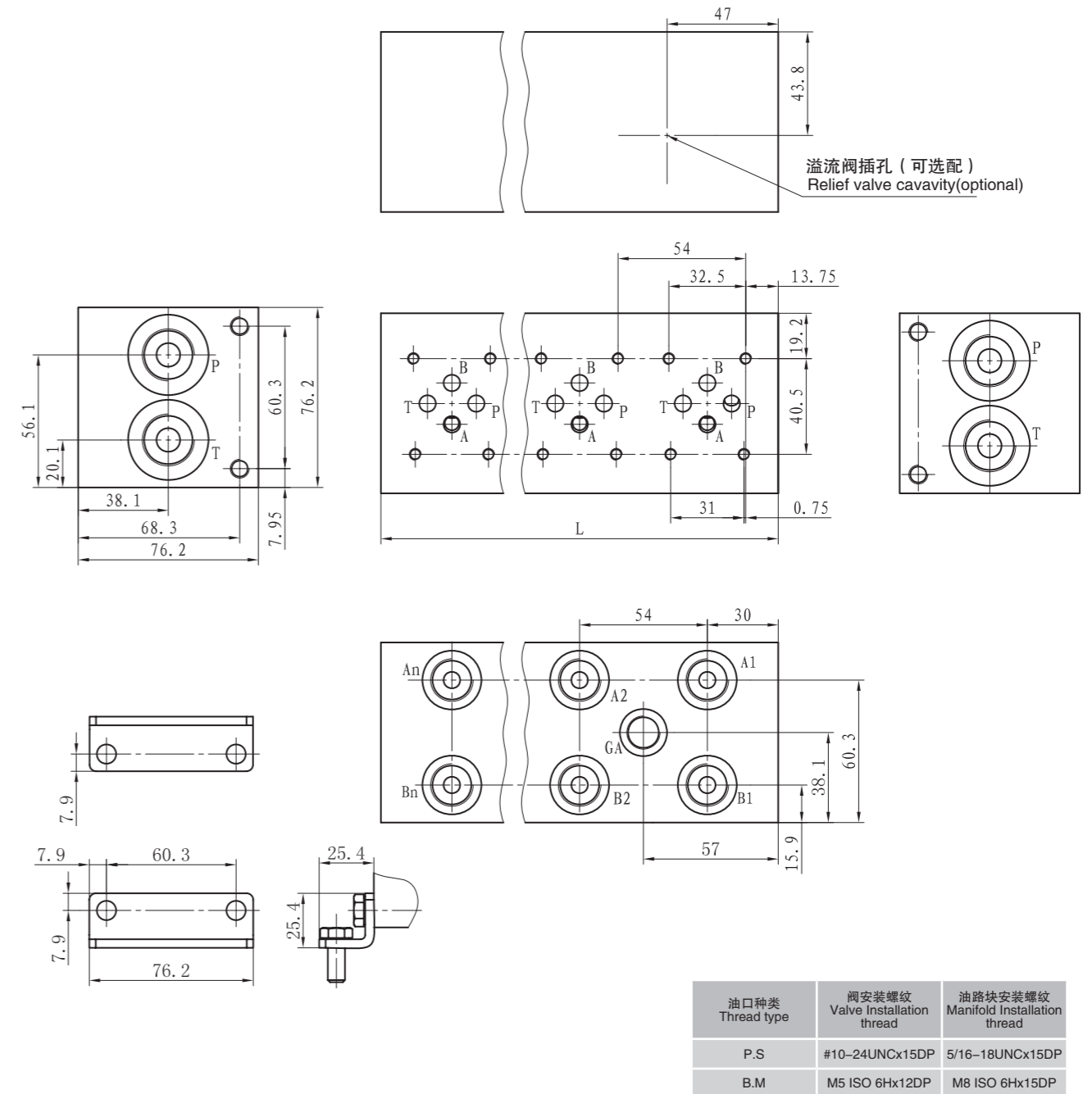
并联数量 Stations number  
1-2-3-4-5-6-7-8-9-10

附加说明  
For further details

Cavity 省略=无溢流阀插孔  
C=海德福斯插孔10-2  
No code=Without cavity of relief valve  
C=With cavity of relief valve 10-2

油路块螺纹 Thread type	P,T	A,B	GA
P NPT(Z)	NPT1/2	NPT3/8	NPT1/4
S SAE	SAE10	SAE8	SAE6
B BSP(G)	BSP1/2	BSP3/8	/
M M	M22X1.5	M18X1.5	/

#### HSZVB6P 阀板 外形尺寸 HSZVB6P Installation Dimensions



油口种类 Thread type	阀安装螺纹 Valve installation thread	油路块安装螺纹 Manifold installation thread
P,S	#10-24UNCx15DP	5/16-18UNCx15DP
B,M	M5 ISO 6Hx12DP	M8 ISO 6Hx15DP

并联数量 Stations number	1	2	3	4	5	6	7	8	9	10	11	12	13	14	15	16
L(mm)	60	114	168	222	276	330	384	438	492	546	600	654	708	762	816	870

注：1联带溢流阀的油路块长度为79.2mm。1联不带压力表接口。  
Attention: The length of 1 station manifold with relief valve is 79.2mm, 1 station manifold without oil port for pressure gauge.