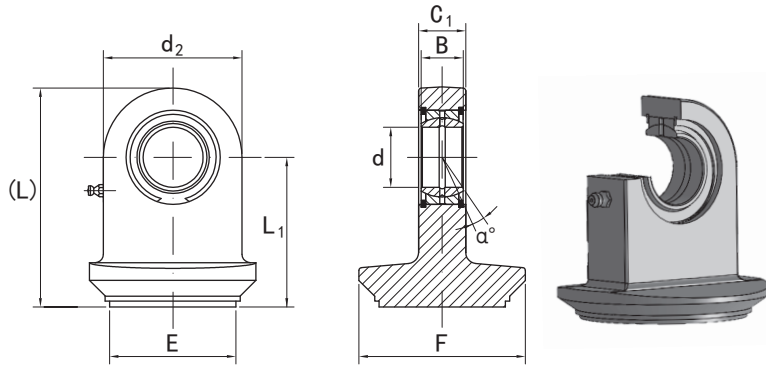


■ 用于液压部件的杆端关节轴承 **TS..NF..** 系列

KGBAL®

ROD ENDS FOR HYDRAULIC COMPONENTS TS..NF.. SERIES

需维护、焊接型 Requiring maintenance, for welding



壳体Housing	内圈Inner ring	外圈Outer ring
合金钢Alloy steel	轴承钢Bearing steel 热处理Heat treated:HRC58-64 磷化Phosphating	轴承钢Bearing steel 热处理Heat treated:HRC54-60 磷化Phosphating
摩擦副Sliding contact surfaces:		钢/钢 Steel/Steel

型号 Part No.	尺寸 Dimensions									向心型号 Bearings
	d	B	C ₁	L ₁	d ₂	(L)	E	F	α	
TS 20 NF 35	20	16	19	48.5	50	73.5	35	45	9	GE 20 ES
TS 20 NF 40	20	16	19	48.5	50	73.5	40	50	9	GE 20 ES
TS 20 NF 45	20	16	19	48.5	50	73.5	45	55	9	GE 20 ES
TS 25 NF 50	25	20	23	57.5	55	85	50	60	7	GE 25 ES
TS 25 NF 55	25	20	23	57.5	55	85	55	65	7	GE 25 ES
TS 30 NF 60	30	22	28	63.5	65	96	60	70	6	GE 30 ES
TS 30 NF 63	30	22	28	63.5	65	96	63	73	6	GE 30 ES
TS 30 NF 65	30	22	28	63.5	65	96	65	75	6	GE 30 ES
TS 35 NF 70	35	25	30	73.5	83	115	70	80	6	GE 35 ES
TS 35 NF 75	35	25	30	73.5	83	115	75	90	6	GE 35 ES
TS 35 NF 80	35	25	30	73.5	83	115	80	95	6	GE 35 ES
TS 35 NF 80-1	35	25	30	73.5	83	115	80	90	6	GE 35 ES
TS 40 NF 80	40	28	35	84.5	100	134.5	80	95	7	GE 40 ES
TS 40 NF 85	40	28	35	84.5	100	134.5	85	100	7	GE 40 ES
TS 40 NF 90	40	28	35	84.5	100	134.5	90	105	7	GE 40 ES
TS 40 NF 100	40	28	35	84.5	100	134.5	100	115	7	GE 40 ES
TS 50 NF 110	50	35	40	106.5	123	168	110	130	6	GE 50 ES
TS 50 NF 120	50	35	40	106.5	123	168	120	140	6	GE 50 ES
TS 50 NF 125	50	35	40	106.5	123	168	125	145	6	GE 50 ES