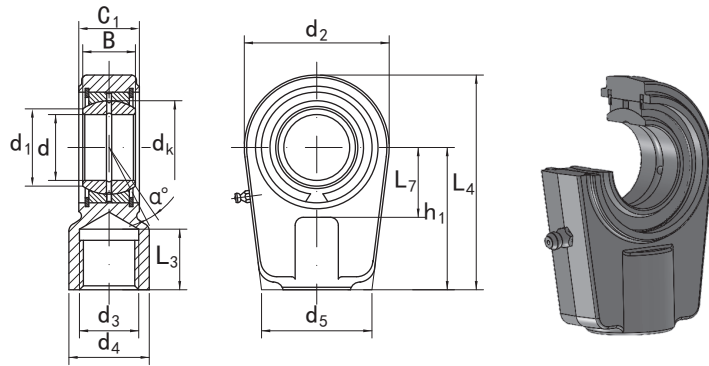


■ 用于液压部件的杆端关节轴承 **GIHR..DO** 系列

**KGBAL**®

**ROD ENDS FOR HYDRAULIC COMPONENTS GIHR..DO SERIES**

需维护、内螺纹型 Requiring maintenance, with female thread



壳体Housing	内圈Inner ring	外圈Outer ring
碳钢Carbon steel	轴承钢Bearing steel	轴承钢Bearing steel
	热处理Heat treated:HRC58-64	热处理Heat treated:HRC54-60
	磷化Phosphating	磷化Phosphating
摩擦副Sliding contact surfaces:		钢/钢 Steel/Steel

型号 Part No.		尺寸 Dimensions														mm		载荷Load ratings kN		重量 Weight kg
右螺纹 Right hand	左螺纹 Left hand	d	d <sub>3</sub> 6H	d <sub>4</sub>	L <sub>3</sub> min	B	C <sub>1</sub>	d <sub>2</sub>	L <sub>7</sub> min	h <sub>1</sub>	L <sub>4</sub>	d <sub>5</sub>	d <sub>1</sub>	d <sub>k</sub>	α ≈	动载荷 Dynamic	静载荷 Static			
GIHR 20 DO	GIHL 20 DO	20	M16×1.5	25	17	16	19	56	25	50	80	46	24.2	29	9	30	72	0.43		
GIHR 25 DO	GIHL 25 DO	25	M16×1.5	25	17	20	23	56	28	50	80	46	29.3	35.5	7	48	72	0.48		
GIHR 30 DO	GIHL 30 DO	30	M22×1.5	32	23	22	28	64	30	60	94	50	34.2	40.7	6	62	106	0.74		
GIHR 35 DO	GIHL 35 DO	35	M28×1.5	40	29	25	30	78	38	70	112	66	39.8	47	6	80	153	1.2		
GIHR 40 DO	GIHL 40 DO	40	M35×1.5	49	36	28	35	94	45	85	135	76	45	53	7	100	250	2		
GIHR 50 DO	GIHL 50 DO	50	M45×1.5	61	46	35	40	116	55	105	168	90	55.9	66	6	156	365	3.8		
GIHR 60 DO	GIHL 60 DO	60	M58×1.5	75	59	44	50	130	65	130	200	120	66.8	80	6	245	400	5.4		
GIHR 70 DO	GIHL 70 DO	70	M65×1.5	86	66	49	55	154	75	150	232	130	77.9	92	6	315	540	8.5		
GIHR 80 DO	GIHL 80 DO	80	M80×2.0	105	81	55	60	176	80	170	265	160	89.4	105	6	400	670	12		
GIHR 90 DO	GIHL 90 DO	90	M100×2.0	124	101	60	65	206	90	210	323	180	98.1	115	5	490	980	21.5		
GIHR 100 DO	GIHL 100 DO	100	M110×2.0	138	111	70	70	231	105	235	360	200	109.5	130	7	610	1120	27.5		
GIHR 110 DO	GIHL 110 DO	110	M120×3.0	152	125	70	80	266	115	265	407.5	220	121.2	140	6	655	1700	40.5		
GIHR 120 DO	GIHL 120 DO	120	M130×3.0	172	135	85	90	340	140	310	490	257	135.5	160	6	950	2900	76		